

DWR PARADEEP

Cyclone bulletin No.08

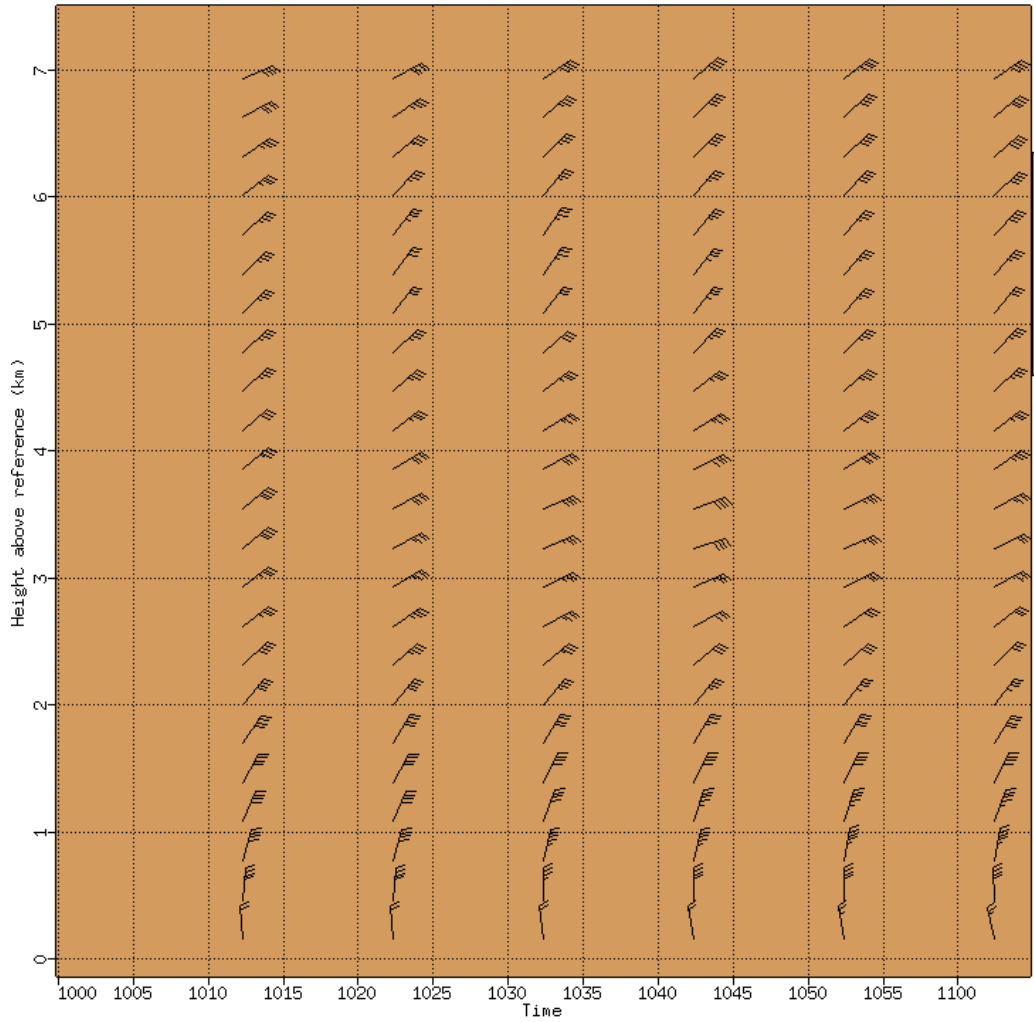
Cyclone : DANA

Time: 24/10/2024 16:30 IST

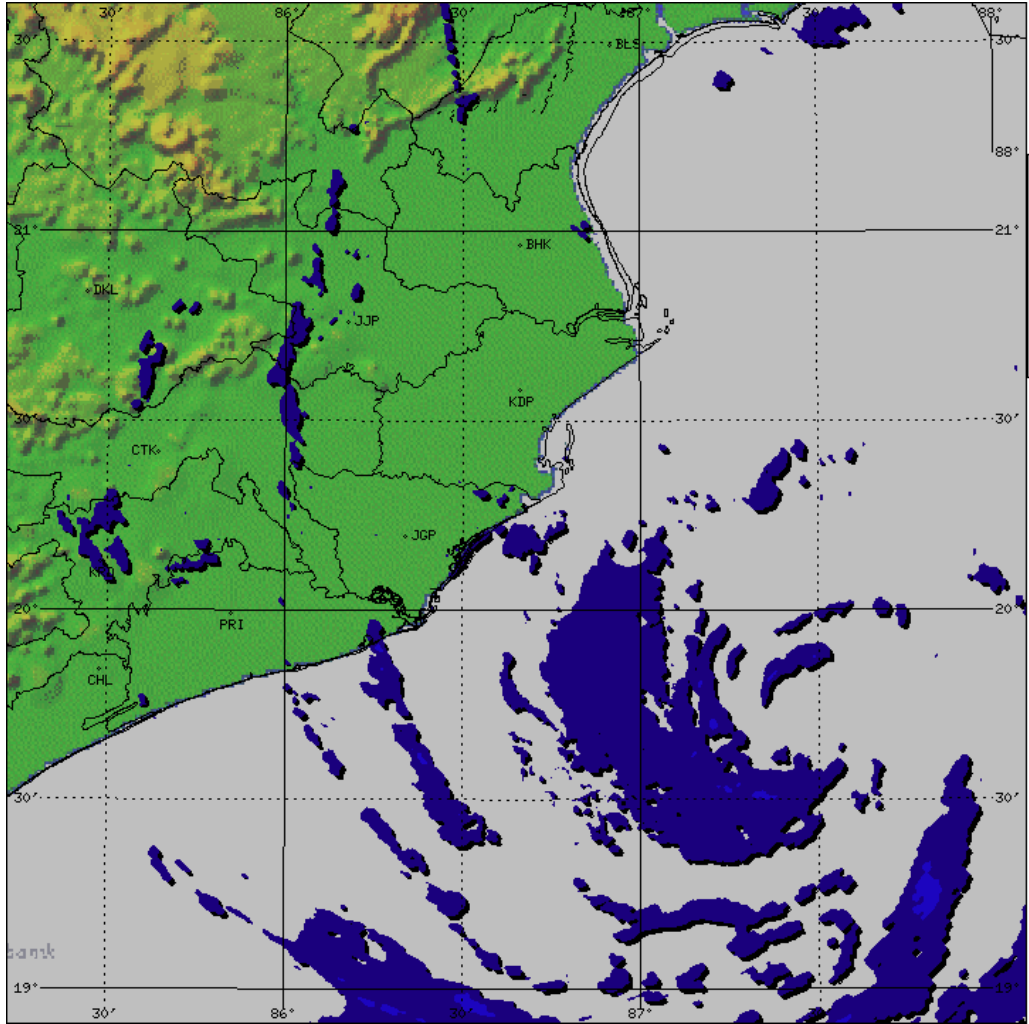
| | | |
|----|--|-----------------------------------|
| 1. | Name of the Station | DWR PARADEEP |
| 2. | Date & Time of observation (UTC) | 24/10/2024 1100 UTC |
| 3. | Name of Cyclone | DANA |
| 4. | Information about the Eye of the cyclone | |
| | a)Is the Eye Visible | Visible |
| | b)Shape of the Eye | Circular |
| | c)Diameter of the Eye (km) | 22km (approx) |
| | d)Estimation of centre of the cyclone based on Eye/Spiral band observation | 19.74N/87.47E/123.5deg/102.6km |
| | e)Echo top (20 dBZ level) of rain bearing clouds around the System within 100 km radius | N/A |
| | f) Maximum radar reflectivity (dBZ) in eye wall and Spiral band region, its height (km) and position (azimuth and distance from the radar) | 36dBZ/6.8km/123.2deg/90.2km |
| | g) Maximum reflectivity at any other area (spiral/ streamers etc) | 40.5dBZ/8.1km/132.3deg/163.4km |
| | h) Maximum radial velocity in observed (mps), its height (km) and its position (azimuth and distance from the Radar) | -37.19mps/1.6km/126.9deg /104.6km |
| | i) Maximum velocity in any other area (spiral / streamers / rain shields etc) | 27.7mps/2.9km/133.4deg/159km |
| 5. | Tendency of the Cyclone | |
| | a. Intensity(Increasing/Decreasing) | Sustaining |
| | b. Duration for which the information on movement pertains to | One hour |
| | c. Direction of Movement | W |
| | d. Estimated speed of Movement | 19 kmph(approx) |
| 6. | Any other Significant Feature | N/A |
| 7. | Confidence | GOOD |

Dhaneesh K (Sc.D)

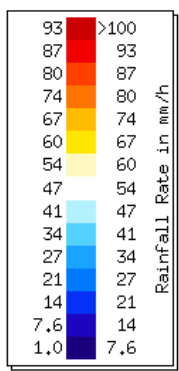
OFFICER-IN-CHARGE
DWR Paradeep

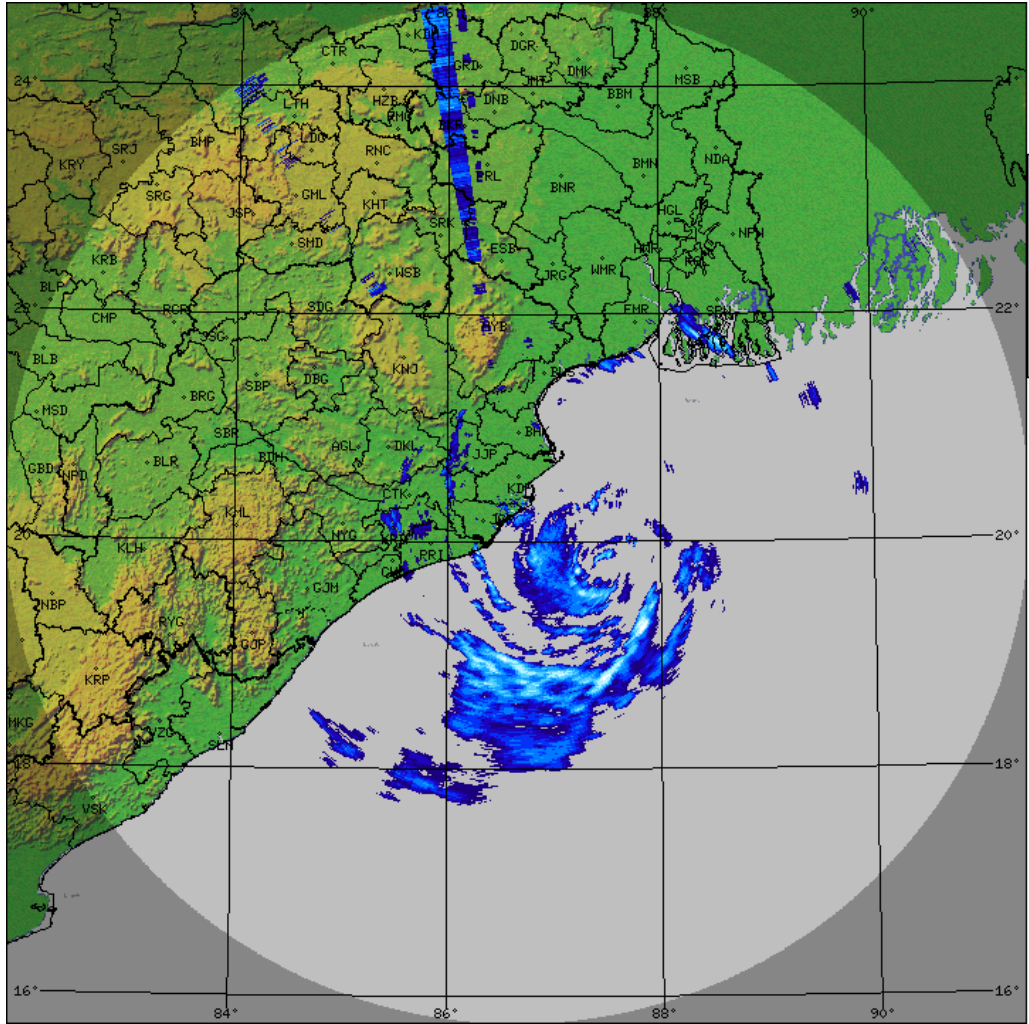


PARADEEP-RADAR
Vol. Vel. Proc.
VVP_30KM
Task: IMD-B
#Intervals:26
Heights:0-8 km
Max Range:30 km
11:02:22Z
24 OCT 2024 UTC



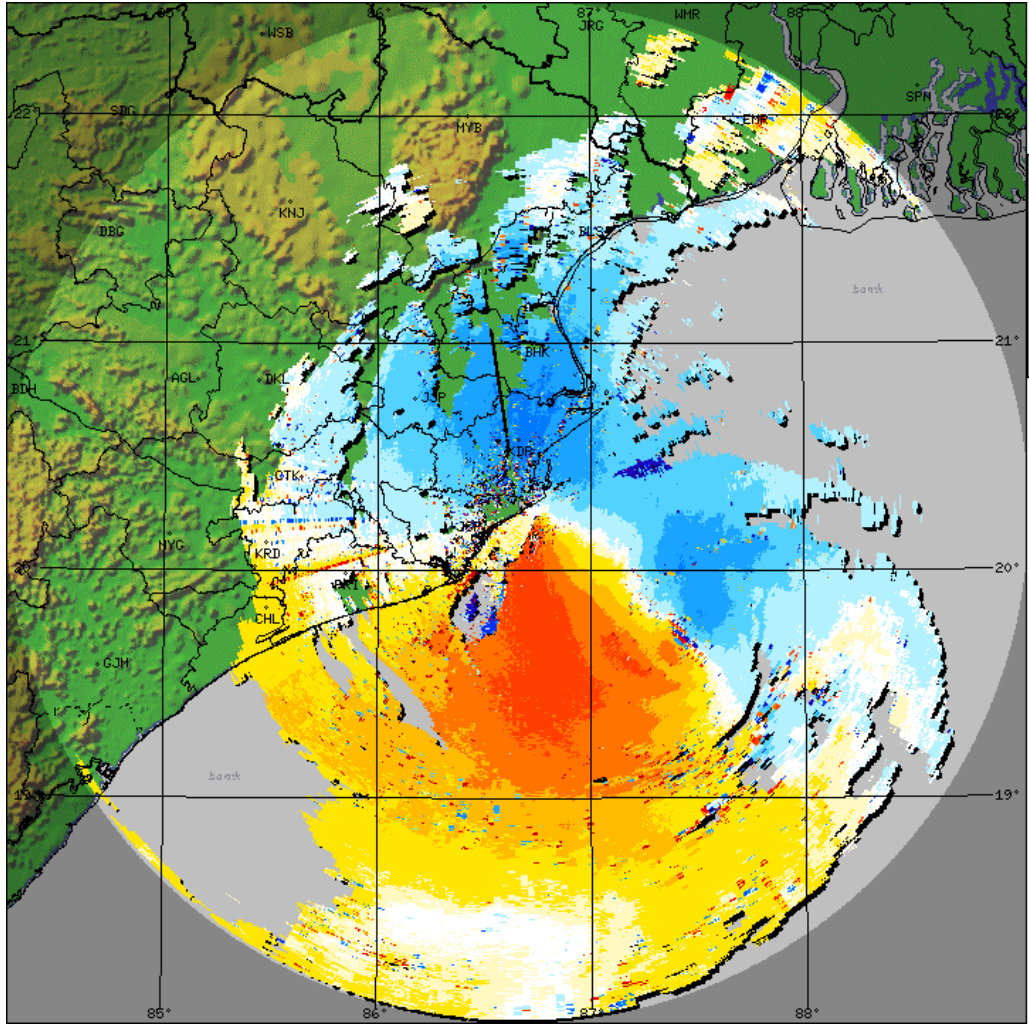
PARADEEP-RADAR
 Surface Rainfall
 SRI_150
 Task: IMD-B
 PRF:600/450
 Melt:Unknown
 Max Range:150 km
11:02:22Z
24 OCT 2024 UTC



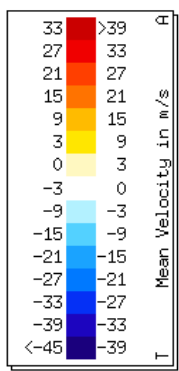


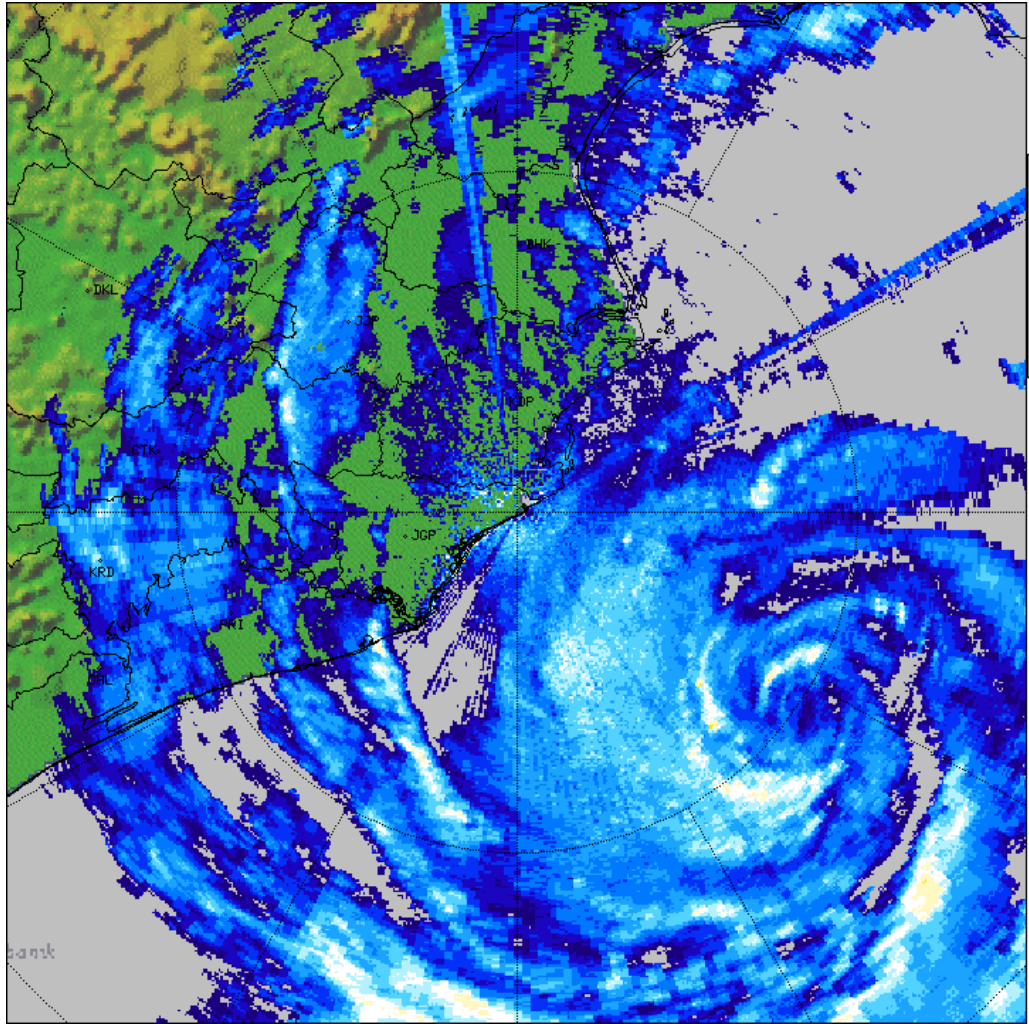
PARADEEP-RADAR
 PPI
 PPI_Z
 Task: IMD-C
 PRF: 250Hz
 Elevation:0,5
 Max Range:500 km
11:00:24Z
24 OCT 2024 UTC

| | | |
|------|-------|---------------------|
| 57,3 | >60,0 | Reflectivity in dBZ |
| 54,7 | 57,3 | |
| 52,0 | 54,7 | |
| 49,3 | 52,0 | |
| 46,7 | 49,3 | |
| 44,0 | 46,7 | |
| 41,3 | 44,0 | |
| 38,7 | 41,3 | |
| 36,0 | 38,7 | |
| 33,3 | 36,0 | |
| 30,7 | 33,3 | |
| 28,0 | 30,7 | |
| 25,3 | 28,0 | |
| 22,7 | 25,3 | |
| 20,0 | 22,7 | |

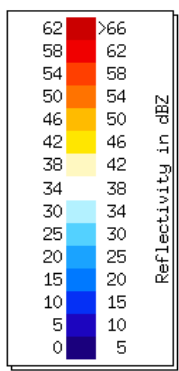


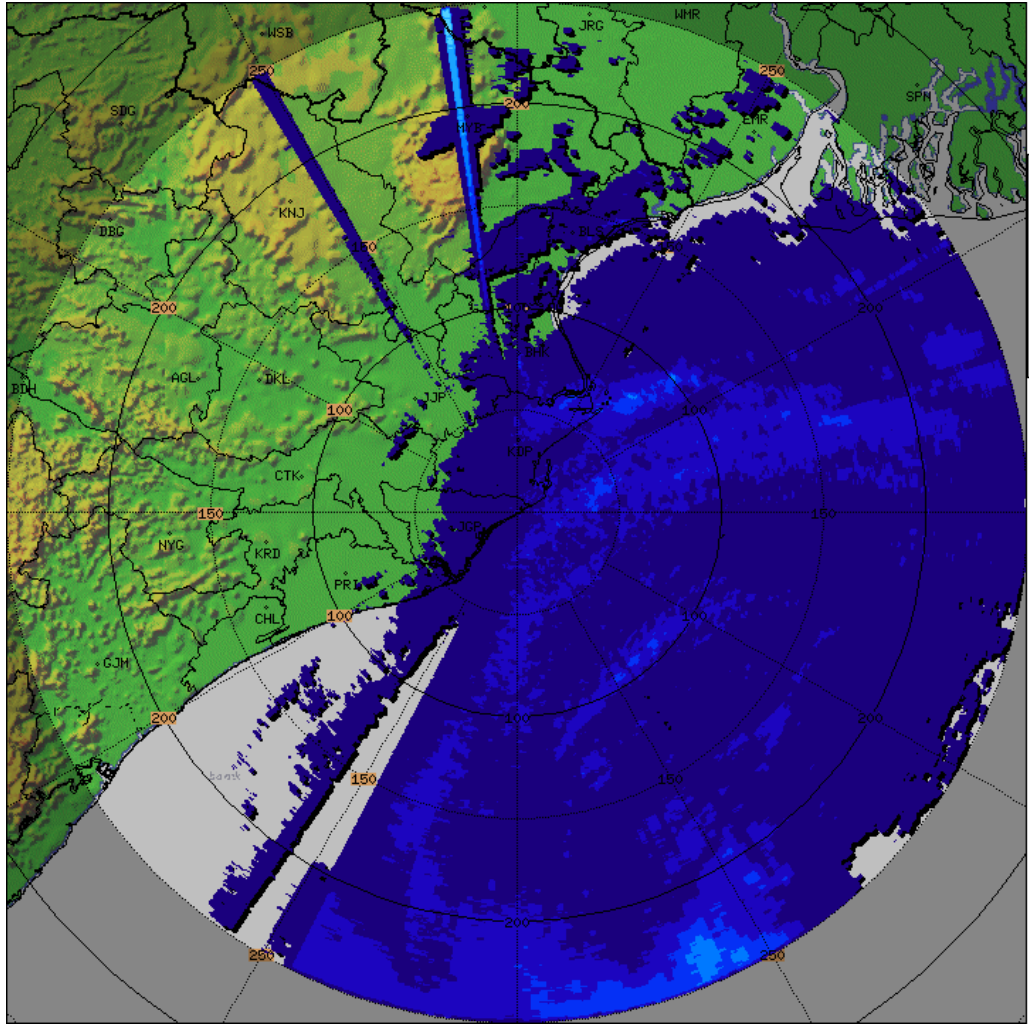
PARADEEP-RADAR
 PPI
 PPI_V
 Task: IMD-B
 PRF:600/450
 Elevation:0.5
 Max Range:250 km
11:02:22Z
24 OCT 2024 UTC





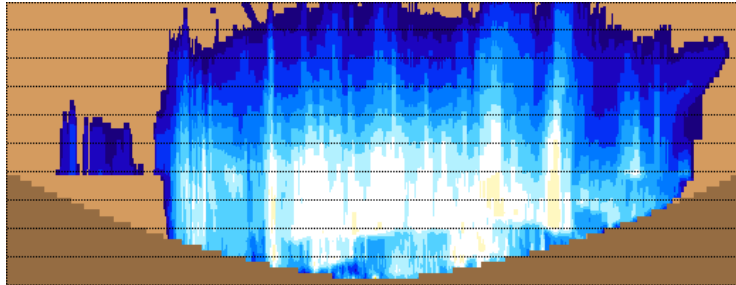
PARADEEP-RADAR
PPI
PPI_150KM
Task: IMD-B
PRF:600/450
Elevation:0.5
Max Range:150 km
11:02:22Z
24 OCT 2024 UTC





PARADEEP-RADAR
 N Hours Rainfall
 HOUR_24
 Task: IMD-B
 PRF:600/450
 Hours:21/24
 Max Range:250 km
03:00:00Z
24 OCT 2024 UTC

| Rain Accum. in mm |
|-------------------|
| 93 |
| 87 |
| 80 |
| 74 |
| 67 |
| 60 |
| 54 |
| 47 |
| 41 |
| 34 |
| 27 |
| 21 |
| 14 |
| 7,6 |
| 1,0 |



13.6
12.1
10.6
9.0
7.5
6.0
4.5
3.0
1.5

PARADEEP-RADAR
Max with panels
MAX_Z
Task: IMD-B
Min Hgt:0.0 km
Max Hgt:15.0 km
Max Range:250 km
11:02:22Z
24 OCT 2024 UTC

